

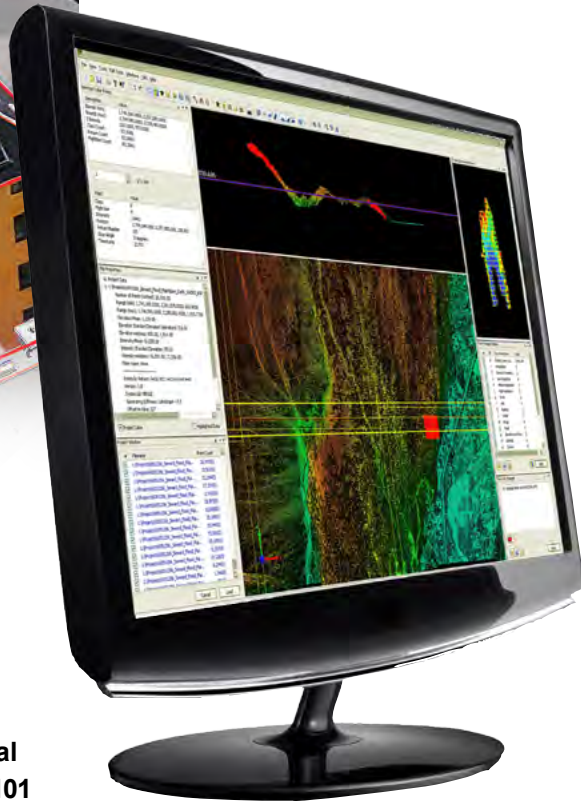


DAT/EM Systems International presents NVIDIA™ 3D Vision

The NVIDIA 3D Vision Bundle 120Hz, single-panel LCD display is the most affordable 3D viewing option available for DAT/EM Summit Evolution™ digital stereoplottor and LandScape™ pointcloud processing toolkit. The monitor's sleek profile allows it to comfortably fit most desktop environments, and the competitive price makes this bundle a great option for conservative budgets. Excellent graphics quality, small footprint, dual-purpose 2D and 3D viewing capability plus a comfortable price makes this the clear choice for technical CAD and GIS workstation.

The NVIDIA 3D Vision Bundle includes the following components:

- A 22-inch wide-format 120-Hz refresh-rate single LCD monitor* with crystal-clear stereo image viewing and smooth panning
- One pair of active glasses
- NVIDIA infrared emitter



DAT/EM Systems International
8240 Sandlewood Place, Suite 101
Anchorage, AK 99507 USA
T: +1 907-522-3681
F: +1 907-522-3688
sales@datem.com
www.datem.com

Stay Connected

The NVIDIA 3D Vision Kit includes the glasses and the emitter.

* Several monitors are now certified for use with the NVIDIA 3D Vision Kit. Monitors are available separately. Call for current options.

Additional glasses also are available separately.